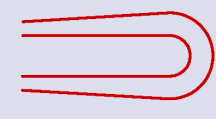




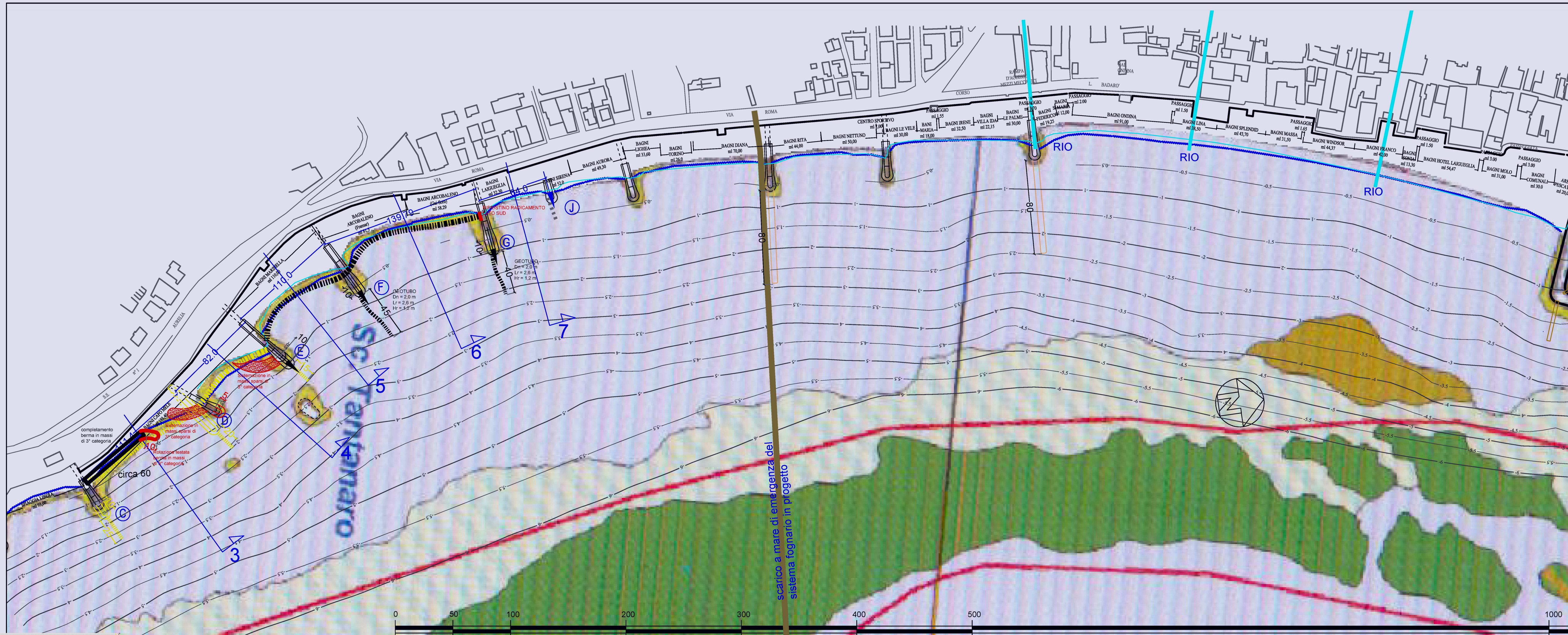


NOTA: LE OPERE REALIZZATE E/O CONFERMATE SONO RAPPRESENTATE IN COLORE NERO

-  PROLUNGAMENTO PENNELLI IN MASSI
-  SCARICHI ESISTENTI PROLUNGATI
-  NUOVI INTERVENTI IN VARIANTE
-  INTERVENTI IN PROGETTO ABBANDONATI
-  RIPASCIMENTO



Tav.4

PROGETTO DI CONSOLIDAMENTO DELLE SPIAGGE DI PERTINENZA DELLE CONCESSIONI BALNEARI DENOMINATE CAPO MELE, MARINELLA ED ARCOBALENO.

VARIANTE IN CORSO D'OPERA APRILE 2017

PLANIMETRIA DI RAFFRONTO PROGETTO - VARIANTE

N.P. 1995

SCALA 1:2000

Dott. ing. Paolo GAGGERO

C.F. GGGH43987480F

Collaboratore Dott. ing. Enzo Rossi

Aprile 2017

Filescabla/np 1995 Loiguglie bogri ripascimento